

UKATA MATTERS

THE MAGAZINE FROM THE UK ASBESTOS TRAINING ASSOCIATION

ISSUE 6 | SUMMER 2015

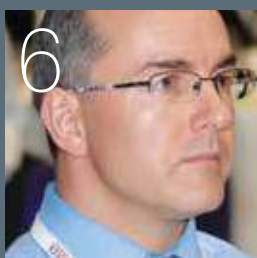


**SAFETY &
HEALTH** Expo

ExCeL London 16 to 18 June



Also in this issue...



6
AGM & Conference



8
In the News



11
Digital UKATA



12
Technical & Training



18
Member News



PENINSULA
Business Services

FREE ACCESS TO THE UK'S EMPLOYMENT LAW AND HEALTH & SAFETY SPECIALISTS

Peninsula is the UK's largest employment law and health & safety consultancy, providing advice to more than 30,000 employers in the UK and Ireland. We provide our clients with 24/7 support and easy access to a full range of employment law and health & safety services.

Our aim is to protect and support your business by: regularly reviewing and updating your documentation, providing expert advice and guidance on any workplace issue, as well as representation and insurance should your business face a tribunal claim.

THIS ADVERT ENTITLES YOU TO ONE **FREE ADVICE CALL**

If you require some pragmatic employment law advice or simply need some additional support for your current HR function, simply call the number opposite and use your FREE advice call allowance.

To find out more about how Peninsula can help your business please call Liam Regan **0161 836 9151** or email liam.regan@peninsula-uk.com
QUOTE: UKATA


PENINSULA
Business Services

FREE ADVICE CALL

Your direct line to expert
Employment Law advice

0161 836 9151



Welcome...

...from the Editor

Our regular readers will immediately notice visual changes to the style and layout of UKATA Matters compared to past issues. This is all about the evolution of our brand, with this new look designed to bring us more in line with other respected business publications in national health and safety arenas. This reflects the growing interest in UKATA from corporate partners and other interested parties as well as feedback from members.

With the launch of the new website and new categories of Corporate, Associate and Affiliate Membership, it was felt now was the right time to bring the magazine in line with many of the important changes afoot within the Association. We hope you like the new format but as always, your feedback and comments are always appreciated and very welcome.

Final preparations are being made for the Safety and Health Expo and the Team will be there to extend a personal welcome to all who visit stand R2180 from 16-18 June, 2015.

Our AGM and Conference is now just around the corner and we have the very latest news on developments as the countdown begins in earnest to the biggest event in the UKATA calendar. We have a great line-up of speakers for the AGM and Conference which I am certain members will find both interesting and of great benefit to their own business development.

We can also provide members with greater insight into the latest innovative ideas from both the development and marketing aspects of UKATA. Members will already have had the opportunity to visit the new UKATA website and we hope everyone approves of the state of the art interactive layout and agrees that the website has been well worth the wait. The website has been the brainchild of our General Manager Craig Evans and I would like to extend my personal heartfelt thanks for this phenomenal achievement! We have also welcomed Sasha Brailsford to the team at Markham Vale and she has been busy raising UKATA's profile across all Social Media platforms. More details of the effect Social Media is having in the UKATA Forum is outlined inside this edition. I'm sure members who use Social Media will agree that Sasha has generated much-needed enthusiasm and dynamism into our online presence.

The new website has been just part of a greater brand development within UKATA, which includes new logos, an expansion of our presence on Twitter, Facebook and Pinterest, to name but a few. Development and Marketing is just one of the aspects in which UKATA is making great strides. We are looking forward to demonstrating at the forthcoming AGM and Conference that UKATA is indeed entering a new era in the development of the most eminent Asbestos Training Association in the UK. One of our own Directors, Bob Bridge, has also taken time out of his busy schedule, to report on the very latest update on the CDM Regulations 2015 and the possible implications for those working in the asbestos industry. Whilst members are unlikely to be directly affected, potentially they may expect more business as employers are required to seriously consider the need for asbestos awareness training as an essential requirement.



Finally, I would also like to pay tribute to the magnificent effort and commitment of Craig Evans, his Senior Management Gill Lewis and Debbie Nixon, supported by the entire Team. They have been working tirelessly behind the scenes to deliver many of the new changes which have recently been introduced entirely for the benefit of the Association and its members.

I have no doubt that I speak on behalf of all Directors when I say that the commitment and dedication of the UKATA Team to continually raise awareness of the dangers of asbestos as well as supporting the entire membership is indeed second to none!

*Jacqui Royall,
Editor*

Contents

Update from the General Manager.....	4	Technical & Training update.....	12	Asbestos deaths epidemic.....	21
New campaign.....	5	National Cancer Survivor day.....	13	CDM regulations.....	22
AGM & conference.....	6	Peninsula update.....	15	RoSPA.....	24
Asbestos in the news.....	8	Safety & Health Expo.....	16	Competitions.....	26
Development & Marketing update.....	10	Member news.....	18		

Update...

...from the General Manager

UKATA's proposed new offices



As I have been in post as General Manager of UKATA for just about a year, now seems the right time to include a regular editorial from my perspective.

At the time of my appointment, part of my commitment to the Association was to develop a bespoke website and raise the profile throughout Social Media as well as concentrating on the Marketing of UKATA. These key areas have been a particular passion of mine since I began my employment in 2011 and with a great deal of support from the Senior Management Team and Directors, my dreams have been realised.

The new website has been well received and I would like to say a special thanks to all who have taken the time to personally congratulate me, it really does mean a lot. I am working on new initiatives for the website and recommend that readers visit regularly to keep abreast of what is happening here at UKATA.

The UKATA blog is the next area which I hope visitors to the website will support, as it is intended to incorporate the latest news and updates from asbestos communities

throughout the world. My vision is that the UKATA website will become the first port of call for anyone wanting to know about asbestos, not just in the UK but throughout the world.

I would also like to say a massive thank you to UKATA members who have already declared their support for the Train Safe, Work Safe, Keep Safe Campaign. When developing such initiatives, it is always great when others understand the concept and I must say the response has been overwhelming.

As with the bespoke courses, the Board agreed the idea in principle, allowing me to manage the operational procedures. I trust Members will understand that this has been no 'mean feat' although I believe what the Senior Management Team and I have developed is a clear and concise procedure to enable members to submit their own bespoke courses for approval by the Board. Although I have the aptitude to develop Management systems

none of these things can be achieved by one person alone and without the support of an amazing Team of colleagues, much of what I have achieved would not have been possible and I formally thank each and every one for their tireless support.

UKATA's attendance at the Safety and Health Expo at the Excel London, 16 - 18 June, 2015 is the next big venture high on the agenda. Preparation is well under way for this massive event and I hope many of you will take the time to come along and say hello. The stand is being manned by selected members of the UKATA Team throughout, with Gill Lewis and myself being there the entire three days.

Following on from the Expo, the next major event on the UKATA calendar is of course the UKATA AGM and Conference. Members will already have received detailed information about this occasion but I would like to take this opportunity to extend the invitation to all our readers. If you are

interested in attending the UKATA Conference on 10 July 2015, please do not hesitate to contact Gill Lewis at the UKATA Office on 01246 824437 or email gill.lewis@ukata.org.uk who will be more than happy to discuss the detail with you.

During the summer it is hoped that UKATA will be in a position to relocate to purpose-built office space on the Markham Vale site. As those who have visited us will know, we are now literally bursting at the seams and it is definitely time to make the 'move'. I will be in a position to report in full in the next UKATA Matters, as the building is reaching completion.

Finally, the development of a UKATA bespoke Asbestos Handbook is well under way and it is anticipated to be ready for publication sometime during the summer. I will of course keep members updated on progress and again will update UKATA Matters readers in the next edition.

Craig Evans
General Manager



TRAIN WORK KEEP

TRAIN SAFE, WORK SAFE, KEEP SAFE!

OFFICIAL UKATA CAMPAIGN

Train Safe, Work Safe, Keep Safe Campaign

UKATA Matters can now provide readers with news of an exciting new initiative whereby UKATA members will, for a limited period, be offering FREE asbestos training to individuals who may not have previously been aware of the importance of receiving training.

Since the launch of the Certificate Generator, members have delivered in excess of 500,000 asbestos training courses and UKATA is all too aware that there are still many 1,000s of tradespeople who have not received any kind of asbestos training, potentially putting themselves at increased risk of inadvertently exposing themselves to deadly fibres due to disturbing asbestos during building work.

Over 4,500 people a year in Britain still die as a result of diseases caused by exposure to asbestos. Of these, 20 tradesmen die each week due to asbestos exposure, including eight joiners, six electricians and

four plumbers. For this reason, UKATA members are offering free training as a way of highlighting the potential dangers of asbestos and the need for appropriate training.

This training is not intended to be for large organisations, but rather for individual tradespeople and DIY enthusiasts who may not otherwise benefit from such training or worse still, be aware that such training exists. UKATA members will generously offer asbestos awareness training at their own expense as they feel so strongly that the message about the dangers of asbestos still needs to be conveyed to the wider public. For its part, UKATA will

promote the training through a comprehensive media campaign, here in UKATA Matters and on Social Media. UKATA will officially launch the Train Safe, Work Safe, Keep Safe Campaign at the forthcoming Safety and Health Expo, Excel, London from 16 - 18 June 2015. The Campaign will be the key focus of their trade stand R2180 and they invite readers to come along and find out more!

You may recall that the HSE ran their own Asbestos Training Pledge in 2012 and at that time UKATA members pledged over 4,000 hours of free training. This equates to over 1,000 tradespeople receiving free training which they may not have not

otherwise have received. UKATA now feels the time is right to run their exclusive campaign and anticipate exceeding previous figures at least twofold and strongly suspect that the generosity of members will exceed all expectations!

Following a launch of the initiative at the Expo in June, it is anticipated that any complimentary training would be carried out on selected dates throughout September and October 2015. Look out for further details on the UKATA website at www.ukata.org.uk and follow us on Twitter @UKATA_Official

AGM & Conference:

Friday 10 July 2015



The most important event in the UKATA calendar is fast approaching! The AGM and Conference has earned the status of being the 'not to be missed' occasion and delegate numbers have increased significantly in comparison to the same time last year.

Once again, this prestigious event will be held at the luxurious Radisson Blu Hotel at East Midlands Airport which is endorsed by members as their preferred venue of choice. Although the Formal AGM is only open to UKATA Professional Members and their representatives, all interested parties including members clients are welcome to attend the Conference which commences at 11.00am.

Members have been issued with a formal notice and booking form as a matter of course but if you are interested in attending the conference as a guest of UKATA please contact Gill Lewis at gill.lewis@ukata.org.uk to reserve your place. Alternatively please telephone 01246 824437 for further information.

UKATA is very proud of the programme of events planned, especially as our very own Director Professor R J Willey is launching the Conference with his motivational presentation entitled "Legislation & Regulations – Who Needs Them?"

Included within the programme is a presentation by an expert from the Environment Agency who will hopefully be in a position to offer advice to members on dealing with hazardous waste.

The final highlight of the day will be a HR Update from Peninsula followed by professional speaker Richard Denney on the subject 'How To Grow Your Business'. It is anticipated that members will benefit from the advice offered

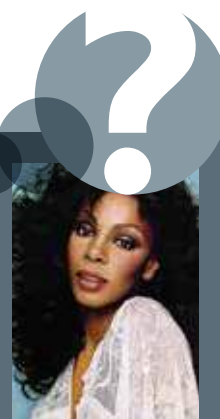
as both these speakers have come highly recommended.

The day will conclude with an opportunity for members to meet with UKATA Directors and Staff for help and advice with a particular issue, or network with other members and interested parties.

For those members wishing to support the aims and objectives of UKATA by using their expertise to assist in developing strategies for the benefit of the Association, there are a number of Directorship vacancies available.

DID YOU KNOW

Asbestos is thought to have contributed to the death of The Queen of Disco, Donna Summer after inhaling toxic dust from the 9/11 site. This asbestos-contaminated dust is likely to have affected countless New Yorkers.





The UKATA Office will be more than happy to receive nominations from their members and anyone requiring further information on the responsibilities of a UKATA Director should contact Gill Lewis at the UKATA Office or by email at gill.lewis@ukata.org.uk

To ease the stress of travel and attendance all in one day, we have secured a number of rooms at preferential delegate rates. This will give you

the chance to relax and unwind and wake up fresh to approach the day's exciting and informative content. Rooms can be booked via UKATA Head Office. Members also have the opportunity to join the UKATA Directors and Staff at a Social gathering the evening before the AGM where they can enjoy the relaxed atmosphere over complimentary drinks and buffet.



Asbestos in the news

Asbestos in schools problem is worse than previously thought

UKATA responds to latest findings from the BBC on the killer dust

A story aired by the BBC relating to Devon man Mr Wallace and his exposure to asbestos in schools is concerning enough; but the UK Asbestos Training Association (UKATA) say that figures obtained by the BBC suggesting that asbestos may be more prevalent in schools than previously thought - will not come as any surprise to those working in the industry.





Asbestos is still the biggest workplace killer in the UK.

Asbestos was widely used as a building material in the 60s and 70s and although banned in the UK in 1999 the damage was already done. While asbestos can be managed safely if left undisturbed, the latest statistics have led to renewed demands to make schools safer.

"UKATA has been campaigning on the issue of asbestos in schools and public buildings generally for some time now," said Craig Evans, General Manager of UKATA. Figures released by the BBC suggest that asbestos is present in nine out of ten schools. Although these statistics are higher than official estimates, it will come as no surprise to those involved in the Health and Safety sector. There are established procedures in place to manage asbestos safely in all public buildings but the important message here is to understand what the requirements are and to ensure that regulations are adhered to. The safety of children and adults is paramount and UKATA believes that high quality education in the dangers of asbestos is vital to ensure that asbestos-related diseases become a thing of the past.

UKATA expressed serious concern only last year when Birmingham City Council advised Yardley School to open despite being contaminated by asbestos following a fire at

a nearby industrial estate. UKATA was compelled to warn the Authority of the serious dangers in exposing staff and children to potential fatal asbestos fibres released by the incident. Craig has also written several articles on the potential dangers of asbestos in schools referring to the case of Mr Wallace as an example.

In post war 1940s Britain the use of asbestos in building materials offered a cheap, yet excellent quality product which was obviously extremely popular within the construction industry. This led to asbestos being introduced into both domestic and public buildings during this era of rapid development which obviously included hundreds of new schools. The chances are therefore high that any school built between 1945 and 1980 contains asbestos.

In the case of Mr Wallace; he was diagnosed with mesothelioma (a terminal cancer associated with asbestos exposure) after being exposed to asbestos in several Devon schools he attended as a child. As

a result he was awarded £275,000 by Devon County Council and his case may not be the last.

Asbestos is still the biggest workplace killer in the UK and The House of Commons Education Committee heard as many as 300 former school pupils develop asbestos-related cancer every year, while the National Union of Teachers has called for all asbestos in schools to be removed.

"Due to asbestos containing products being integrated within the structure of so many school buildings, removal programmes would be prohibitive and in many cases, impractical," added Craig. "As long as effective asbestos management systems are in place to comply with legislation, staff, parents, children and contractors can be reassured that every possible action has been taken to ensure they are protected from unnecessary exposure to asbestos.

Left undisturbed, in the majority of cases asbestos is considered harmless, only becoming dangerous when fibres become

airborne. When materials containing asbestos are damaged or degrade there is a real risk of inhaling fibres. This means that anyone liable to disturb asbestos during their work - or who supervises such employees - must receive the correct level of information, instruction and training to enable them to carry out their work safely and competently and without risk to themselves or others. The HSE website contains sections dedicated to providing information and advice for the effective management of asbestos in schools. See <http://www.hse.gov.uk/services/education/asbestos-faqs.htm>

<http://www.ibtimes.co.uk/asbestos-how-drawing-pins-are-killing-off-uk-teachers-1495840>

Development and Marketing

UKATA has been working behind the scenes, developing a series of great new initiatives to further promote the quality and standards that members offer to the industry and wider public. The Board of Directors, together with the dedicated Office Team, have spent many months developing ideas first discussed by members at their Regional Meetings. The following will give readers an idea of recent developments.



UKATA Logos

We have been working on rebranding UKATA to promote a much more corporate image which befits the prominent status UKATA is experiencing throughout industry and the wider community. As part of the rebranding process, a series of new logos has been designed and trademarked, which are available for members to use as they see fit, in order to promote their business as a UKATA member. The established 'globe' logo will of course remain within the series of trademarks for the foreseeable future.

Social Media

UKATA is enjoying a massively increased presence across all Social Media Platforms due to the appointment of a new Social Media and Marketing Assistant, Sasha Brailsford. Sasha is without doubt responsible for the increased presence within Social Media, in particular Twitter and Facebook.

UKATA has gained an impressive number of followers in the short time that Twitter has been active and already we have many within the community who are asking how they can become more involved with the Association. There are so many followers who support UKATA's Aims and Objectives and others who are directly asking for specific help and advice. The long awaited interactive UKATA website has now been launched. The development took a little longer than anticipated but UKATA has been overwhelmed by the positive feedback received from members and the wider public. The concept was the brainchild of Craig Evans, UKATA General Manager and in consultation with the Senior Management Team has created an impressive, informative and user friendly website equal to many of the major corporate companies.

The new design features offer a wealth of information, not just for those in the asbestos and

construction industry, but also members of the public keen to find out more about the 'hidden killer'. Visitors to the website can now search for a training provider much more effectively with the introduction of a fully interactive map. This excellent new facility locates nearly two hundred UKATA members who offer Licensed, Non Licensed and/or Asbestos Awareness training throughout the entire UK.

For anyone interested in becoming a member of UKATA, the benefits, criteria and application process are now readily available on our website. Applications for membership can be completed online and the facility to make card payments has also been introduced.

The validation of UKATA certificates online is without doubt of massive benefit to the construction industry. Before this facility was available certificates could be validated by contacting the UKATA Office. This service will of course remain in place but the great

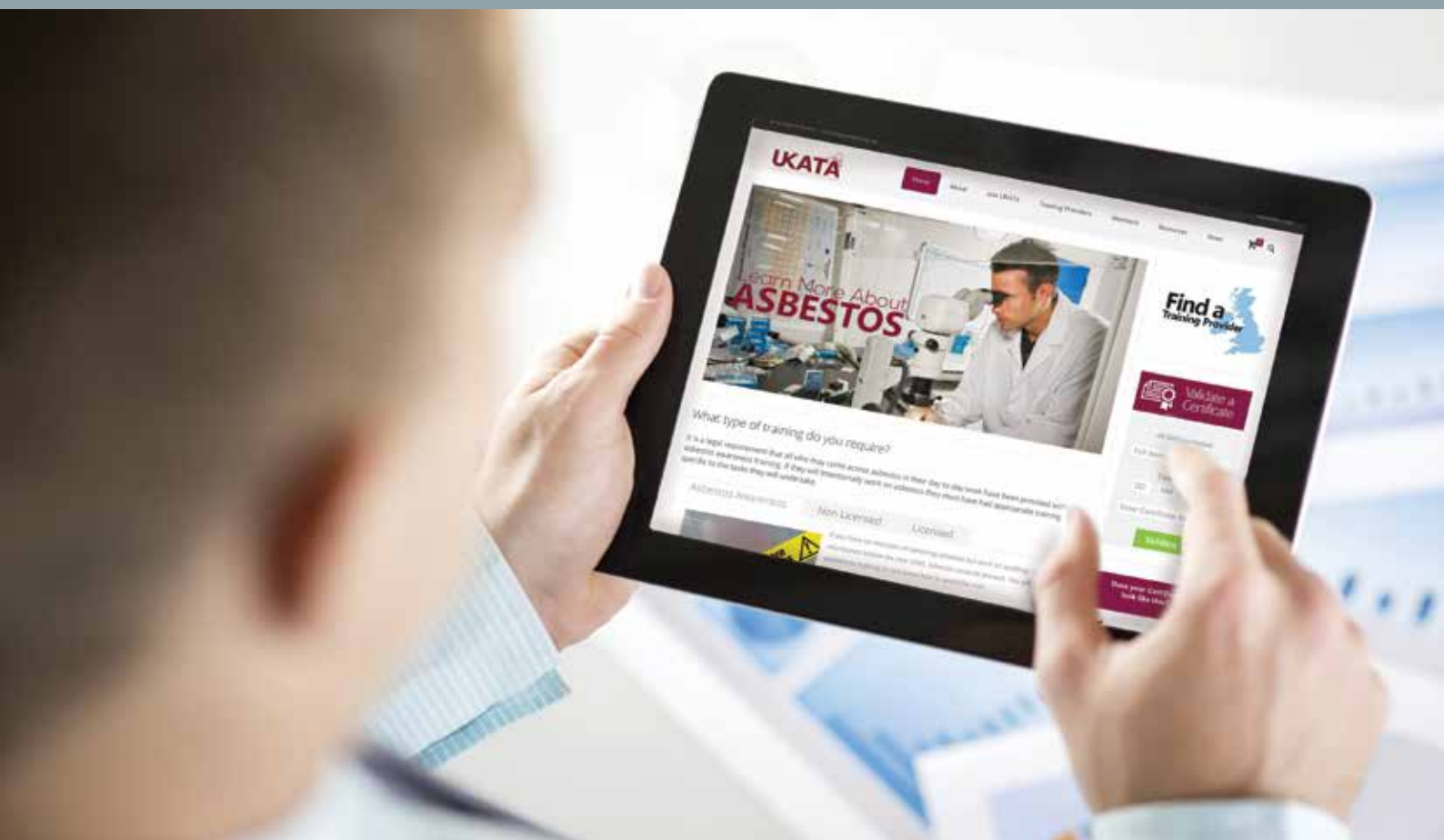
advantage of being able to validate certificates online is that this service is available 24 hours a day, seven days a week.

To validate a certificate simply visit the UKATA website at www.ukata.org.uk and click on the icon to the right of the 'home' page. Please note that this search facility is case sensitive and what is entered on the certificate must be replicated exactly to achieve a successful result.

This will have a massive impact on the construction industry as contractors will no longer have to wait for business hours to validate a certificate, thus avoiding possible delays on site.



https://www.pinterest.com/ukata_official/



News

The UKATA News area has been developed to keep visitors to the website up to date with recent developments relating to asbestos. There will be access to all UKATA press releases, pdf copies of UKATA Matters and information on UKATA calendar of events. Another important feature is the opportunity for UKATA Members to advertise their own job vacancies via a link directly to their website. As members to the UKATA website obviously have an interest in asbestos related information it seems an ideal platform on which to advertise vacancies within this field.

The long awaited UKATA Blog has also been launched and can be accessed via the News area of the website.

During the first few weeks, there have been a series of extremely interesting features, one in particular reviewing the episode of 'George Gently' called 'Breathe in the Air' screened by the BBC. This episode was an accurate portrayal of the very real dangers of asbestos and the implications for extended family members not just those working directly in the industry.

If you have not already done so please take a look at the website at www.ukata.org.uk and let us know what you

think via the feedback tab to the right of the screen.

Craig has many more ground breaking innovative ideas to incorporate within the site and it is the aim to make it the essential place to visit for help and advice with asbestos queries.

DID YOU KNOW

One of the classic Christmas songs- "White Christmas" by Bing Crosby first appeared in the 1942 movie 'Holiday Inn' where the snow scenes were sprayed with white asbestos.



Technical & Training Update

Bespoke Training Courses

The Technical and Training Committee is pleased to announce that UKATA members will be in a position to offer a series of bespoke courses approved by the Association.



Craig Evans, UKATA General Manager and the Senior Management Team have been working closely with the Technical and Training Committee to develop the criteria and operational procedures required to manage such a ground-breaking opportunity.

It has long been acknowledged that many UKATA Members are in a position to offer specialised asbestos training and have expressed a desire to gain UKATA approval as the recognised mark of quality throughout industry.

This is now possible thanks to the expertise

of a designated Syllabus Committee who have committed their own valuable time to review each bespoke syllabus in accordance with legislation. The final acceptance of each bespoke course is then agreed or rejected collectively by the full Board of Directors. Such a stringent procedure ensures that UKATA continues to approve courses to the highest possible standard in line with legislation as a minimum.

The HSE is undertaking a full review of 'The Licensed Contractors' Guide HSG247 and UKATA has been invited to comment, with particular reference

to chapter 4 'Training for employees, supervisors and others working with ACMs.

UKATA will be further consulting with members who carry out Licensed training as their expertise and knowledge will be invaluable in assisting the HSE with such an extensive review.

The first bespoke course to be approved by UKATA is Asbestos Awareness - Duty to Manage which members will be able offer with UKATA certification in the not too distant future.

DID YOU KNOW

During the 1950s Kent cigarettes featured a 'micronite' filter that was supposed to filter any impurities out of the smoke. The filter was made from crocidolite asbestos.





National Cancer Survivors Day

UKATA is planning to take the time to remember National Cancer Survivors Day on the 7th June, by posting on Twitter, Facebook and the UKATA Blog throughout the day in support of all cancer survivors throughout the world.

We plan to use this opportunity to not only appreciate the bravery of all Cancer survivors out there, but express the dangers of Asbestos and how important it is that we fight together to raise awareness.

Dangers of Asbestos

The World Health Organisation has recently estimated that there are more than 125 million people around the world who are currently exposed to asbestos as a result of their work, and at least 107,000 people die each year globally from asbestos-related diseases. Asbestos is an extremely dangerous life threatening material and if handled incorrectly and inhaled, can take your breath away, forever.

The HSE suggests that the mineral is responsible for more than two-thirds of cancer deaths within the industry.

Any building built or refurbished before the year 2000 may contain asbestos.

Asbestos Crocidolite (blue asbestos)

Crocidolite and products containing this fibre have been used in thousands of products for an immense number of applications, such as ceiling tiles, fire protection, insulation materials, chemical insulation, spray on insulation, acid storage battery casings, water supply lines, cement, electrical or telecommunication wires, acid storage battery casings, thermal insulation, millboards (commercial ovens and steam pipes) as well as clutches and brake linings, gaskets and pads for automobiles.



Ceiling tiles



Fire protection



Insulation boards



Spray-on insulation



Water supply lines



Cement sheets containing asbestos



Electrical or telecommunication wires



Thermal insulation



Millboards (commercial ovens and steam pipes)

Crocidolite and products containing this fibre have been banned in many countries.

Chrysotile (white asbestos)

Chrysotile is still widely used in some countries, with approximately 90% being used in asbestos cement building materials, the largest users of which are developing countries.

Chrysotile was used in gaskets, cement, insulation, brake pads, brake linings, roofing materials, and joint compounds.



cement roof



textile cloth

Other remaining uses of chrysotile are in friction materials (7%), textiles and other applications.



All use of asbestos is banned in the UK, but the number of mesothelioma deaths is yet to reach its peak, with experts predicting by 2050, 90,000 people will have died as a result of mesothelioma.

Mesothelioma

Mesothelioma is a cancer of the mesothelial cells. These cells make up the lining that covers the outer surface of most of the body's organs.

The two main types of mesothelioma are:

Pleural Mesothelioma

This cancer develops in the tissue covering the lungs.

Symptoms:

- Pain in the chest or lower back
- Shortness of breath
- High temperature and sweating at night
- Persistent cough
- Unexplained weight loss

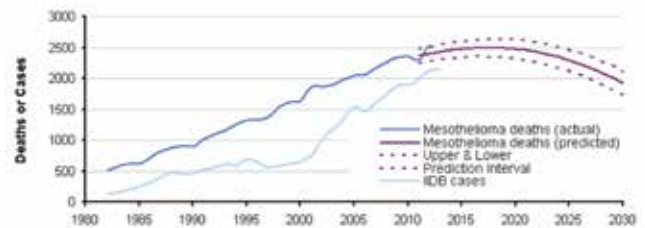
Peritoneal Mesothelioma

This cancer develops in the lining of the abdomen.

Symptoms:

- Pain or swelling in the tummy
- Nausea/vomiting
- Loss of appetite
- Diarrhoea/constipation
- Unexplained weight loss

The heart breaking fact is that most people die within three years of diagnosis as it is usually diagnosed at a late stage. Nearly all treatment is aimed at controlling the disease for as long as possible and keeping symptoms under control. If the disease



is found early you may have chemotherapy, radiotherapy, surgery and time, time to spend with your family and decide what steps to take. We desperately need to get #Asbestos Awareness out there so people take charge of their life and realise how working with or disturbing asbestos can affect them. The effect on people and their families can be

devastating, when they are not adequately trained to remove asbestos.

Sasha Brailsford
Marketing and Social Media Assistant

Social Media Success

Since joining the UKATA Team in March of this year as the new Marketing and Social Media Assistant, Sasha Brailsford has made a massive impact on UKATA's online presence.



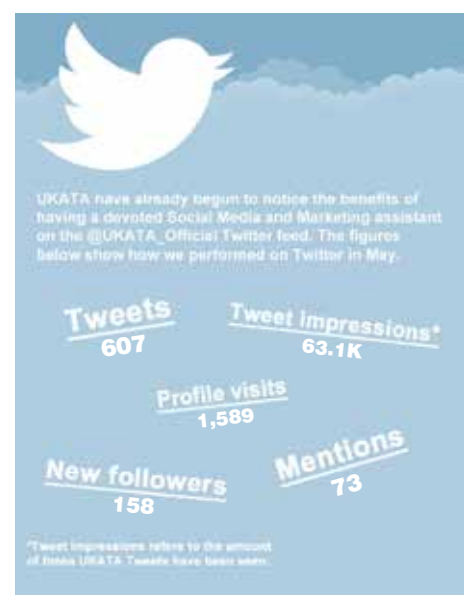
Social Media is without doubt a new venture that will be beneficial when marketing and promoting UKATA.

'Twitter' in particular is an excellent way to interact with interested parties and UKATA 'followers' are increasing rapidly.

Another platform recently introduced by UKATA is 'Pinterest'. Sasha has developed asbestos related 'boards' which contain excellent images including, Asbestos in Buildings, Health Risk, Vintage Advertising and Statistics to name but a few.

This is indeed an excellent resource and well worth a look by visiting the UKATA website and clicking on the Pinterest icon.

As previously mentioned the UKATA blog has now been launched and there will be regular features appearing on a variety of asbestos-related matters. The UKATA blog is very much in its infancy and any ideas for future blogging would be most welcome.



Peninsula Business Services

UKATA has recently joined in partnership with Peninsula to provide HR support, systems and procedures as well as advice on employment law and health and safety. The following is just one example of the excellent advice and support UKATA receives from Peninsula.

2015 is being heralded as the most significant year for parental rights since the introduction of maternity and paternity leave. Parents – both natural and otherwise, will be given more rights than ever before to take time off work in relation to their family plans.

Shared parental leave is a new system that was introduced 5 April 2015. If both parents meet certain eligibility criteria, they are able to share almost one year's leave between themselves. An important aspect of the qualifying criteria is that, both parents must individually meet their own criteria in order for the other parent to take shared parental leave.

Shared parental leave may also be taken by employees who are adopting a child; again subject to criteria.

The requirement for an adoptive parent to work for their employer for at least six months before they become entitled to take statutory adoption leave was removed from April, aligning it with the right to take maternity leave. Statutory adoption pay will also be increased for the first 6 weeks of leave to 90% of the employee's wage, with the remaining leave being paid at the statutory rate (currently £138.18 per week).

Also in April, the entitlement to take statutory adoption leave was widened to include intended parents who receive a child in a surrogacy arrangement and local authority foster parents who are prospective adopters.

Employees who are adopting will have a right to take time off work to attend adoption appointments – one of the couple will be able to take paid leave, the other will take unpaid leave.

Parents are able to take statutory parental leave (unpaid leave to be taken in blocks of one week in order to spend time with children) up to their child's 18th birthday from April. Currently, it is only permitted until the child's 5th birthday.

Statutory maternity, adoption and paternity pay is expected to increase to £139.58 from April, and statutory sick pay (SSP) is expected increase to £88.45. From Thursday 1 October 2015, the adult rate of the National Minimum Wage (NMW) will rise by 20 pence from £6.50 to £6.70 per hour, as recommended by the Low Pay Commission (LPC) in March 2015 this year.

The government has rejected the LPC's recommendation for the apprentice rate. The new apprenticeship rate will be set at £3.30 and represents a rise of 57 pence; the largest ever increase in the National Minimum Wage for apprentices.

Business Secretary Vince Cable is also planning to launch the National Minimum Wage Accelerator - an online tool that will make it easier to compare rates of pay across regions, sectors and occupations. It will take data from the annual survey of hours and earnings and display information about pay so that people are able to compare wages with others in their sector and region.


This is the largest real-terms increase in the National Minimum Wage since 2007, and more than 1.4 million of Britain's lowest-paid workers are set to benefit.

DID YOU KNOW

In the 1950s asbestos was an added ingredient in a brand of toothpaste apparently due to the abrasive quality of its fibres.



UKATA attends second Safety and Health Expo in June



UKATA attends second Safety and Health Expo at the ExCel London from 16-18 June 2015.

UKATA will be attending the Safety and Health Expo at the ExCel London for the second year in succession. This year will see the official launch of the UKATA Campaign 2015 – 'Train Safe, Work Safe, Keep Safe' as well as continuing to promote Corporate, Associate and Affiliate members to those who wish to support and endorse the UKATA brand.

The Association's first attendance at the event last year was a phenomenal success in terms of raising the profile of UKATA and although very difficult to quantify was without doubt an extremely beneficial business opportunity in support of our members. The Expo is the largest UK event, driving excellence for global health and safety with the potential to reach

hundreds of thousands of health and safety professionals worldwide through an integrated campaign which includes relationships with IOSH, RoSPA, BSIF and other industry partners.

The Expo has established itself as the definitive event, offering three days of educational programmes, suppliers, products and much, much more, making

the event a natural place for UKATA to deliver the asbestos message on behalf of members.

Last year UKATA was surprised to receive international interest from the four corners of the globe, including Sweden, Asia, Australia, America, Russia, China and many more.



The British Lung Foundation joins UKATA at the Expo

As part of our ongoing partnership, the British Lung Foundation (BLF) will be joining UKATA on stand R2180 for the first two days of the Expo on 16 and 17 June.

A nurse will be part of the BLF team and will be carrying out lung function tests on the stand and talking to delegates about the current work the charity is undertaking to offer help and support to those people living with the implications of asbestos-related diseases like mesothelioma.

There will also be plenty of BLF leaflets and information available throughout the Expo.

The Expo comes at a time when the BLF is campaigning for sustainable funding for mesothelioma research. Mesothelioma is a deadly cancer caused by breathing in asbestos dust. There is no cure and more than 90% of people will die within three years of diagnosis.

To put these figures into context, over the next 30 years, 60,000 people will die from mesothelioma – unless new treatments are found. Despite these numbers, mesothelioma research receives a fraction of the funds invested in cancers that kill similar numbers of people, such as myeloma and melanoma and it is time this was changed.

The insurance industry already pays out millions each year in compensation to people living with mesothelioma and sadly, their bereaved loved ones. If mesothelioma research in the UK received a fraction of this investment it would be revolutionised; finding the treatments patients so desperately need.

What's more, by helping people live longer, more economically - productive lives, research would also result in insurance companies paying out less in compensation each year – a win-win situation for all concerned.

Even politicians and the insurance companies themselves have said they think this is a fair way of funding mesothelioma research. But we are yet to see any agreement that will result in a sustainable research fund of mesothelioma patients.

The BLF is calling on the insurance industry to invest more in research funding and there is an ongoing campaign to ask MPs to support the campaign. Further details can be found on the British Lung Foundation website at www.blf.org.uk/Page/Meso-campaign

The UK continues to pay the price for years of exposure to asbestos in the past, but the picture overseas is worse, as much of the world continues to use asbestos at an alarming rate. The popularity of asbestos in the developing world is actually accelerating, fuelled by demand for cheap, mass produced building materials. China consumed an astonishing 626,000 metric tons of asbestos in 2007 alone.

The fact that international visitors approach UKATA for asbestos advice is indeed a great accolade and further evidence that the aims and objectives of the Association are respected throughout industry.



DID YOU KNOW

The use of asbestos began to increase in the late 1800s and included high-temperature gaskets for use on steam engines, brakes, and roofing materials.



Member news

James Dodgson, Chair of ESG's Internal Working Group on asbestos in soils, argues that it's time to clear up the confusion over what constitutes safe levels of asbestos in soils.

"The dangers of asbestos in air have been understood for decades, but it has only been over the last few years that awareness has grown in the construction industry of the risk posed to both the well-being of workers on site and future residents, of asbestos in soil. As a result, there has been a significant surge in the last 12 months in developers requesting pre-emptive testing of soil samples to determine whether asbestos remediation work is required for their site. At ESG, for example, we witnessed a 25 per cent increase in enquiries in the first three quarters of 2014 compared with the same period in 2013. Moreover, in the first half of 2014 alone, we found that as much as 55 per cent of the soil samples we tested contained levels of asbestos, which could potentially pose a threat to human health if it was released into the air.

"A recent assertion by the Construction Industry Research Information Association (CIRIA) though, has raised questions in the industry over what exactly constitutes safe levels of asbestos in soil. It suggests that the widely used level of 0.001% asbestos fibre in soil is not necessarily suitable in all cases, as it fails to take into account a variety of factors, which could affect the risk posed, such as the range of soil types in the UK and their differing compositions. For example, loosely-

packed sandy soils could release more asbestos fibres when disturbed than wet clays - an issue which, if not taken into account during the testing and remediation stages of a development project, could lead to unsafe airborne asbestos levels on site.

"However, while CIRIA can raise the issue, it is not in a position to amend official guidance and regulation as to what can be considered safe levels of asbestos in different types of soils. As a result, many are unsure how to assess and manage the risk. While we await formal regulatory guidance, some of which is expected during 2015, ESG is working with CIRIA to support the development of a site handbook for contractors to offer some best practice advice.

"Until an updated, comprehensive regulatory framework for asbestos levels in soil is put in place, the construction industry will struggle to ensure it is truly operating to the highest possible safety standards, and minimising the effect of asbestos on public health and well-being.

"To find out more please visit stand P1350 at the Facilities Show to speak to one of our technical experts."



About ESG

ESG is the UK's leading provider of testing, inspection and compliance services, with comprehensive solutions in Infrastructure, the Built Environment and Energy.

The company, which employs more than 1,300 people, prides itself on the levels of accreditation it holds and has a long-standing reputation for delivering the highest level of service and technical expertise to its clients.

With a history dating back nearly 100 years, ESG continues to be a significant driver of change and innovation within the industry, helping clients to design solutions, as well as enabling them to remain compliant by anticipating and responding to changing legislation, international standards and economic conditions. Today, the business enjoys unrivalled expertise and breadth of scope across a range of market sectors.



Member news

SMH Products Limited

SMH Products Limited achieved Category C membership of UKATA in February of this year and as new members are delighted to share some of their company's recent history with readers.

The past few years have been eventful for SMH. Revealed in 2013 as not only the fastest growing medium-sized company in the North East, but the fastest growing business in the region overall in The North East Fastest 50 (sponsored by Ward Hadaway in association with The Journal newspaper). They were really pleased to be shortlisted for the second year in a row and were delighted when this accolade was added to not one, but two awards at the South Tyneside Business Awards, scooping both Manufacturer of the Year and overall Business of the Year.

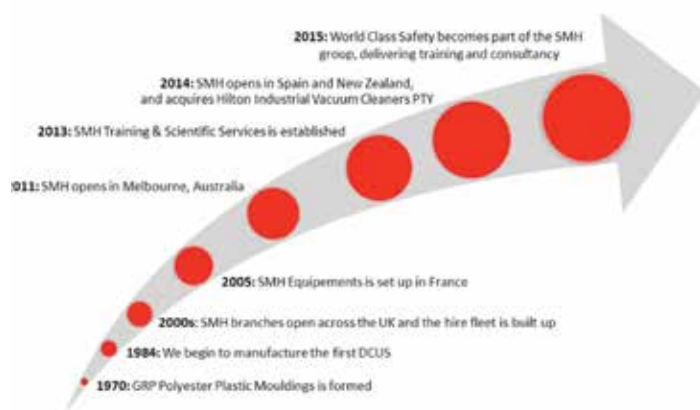
SMH Products were also named as one of the London Stock Exchange Group's 1000 Companies to Inspire Britain for the second year in a row. They had a further piece of good news when Mauricio Torres, director of our Spanish business, reported that SMH's DCU 151 had been named the best decontamination product of 2014 by the Spanish Association for the Decontamination of Hazardous Waste, ADRP (Asociación de descontaminación de residuos peligrosos). The ADRP focuses on the continuing professionalisation of the decontamination industry and were justifiably proud to be chosen as leaders in the field.

Their success was built upon the solid foundations of a highly-skilled workforce; manufacturing and distributing a world-class product. Investment in their

workforce promoted the move towards the creation of training services, which have been developed over time to create a commercial training and consultancy business, catering to the asbestos and associated industries as well as the wider decontamination industry.

SMH Products firmly believe UKATA membership is critical to the development of the business and will ensure they are able to achieve their objectives in current and new markets. They have grown rapidly as a result of partnerships created within the industry and their hope is to continue to develop those partnerships as a member of UKATA.

They would like to add that the support they received from initial application, throughout the audit process and as new members has been outstanding. Far from being a daunting experience the process was simple, clear and all those involved were and continue to be professional and positive. SMH Products are looking forward to a long relationship with UKATA and look forward to meeting other members.



Member profile



Training and Safety Consultants (TASC)

Based in Styal, Cheshire (Five minutes' drive from Manchester International Airport), TASC has been delivering asbestos training services to industry for over ten years.

TASC was recently purchased by T Sumner Smith (TSS) and now forms an integral part of the TSS Training and Safety Consultancy, but will continue to trade under the TASC name moving forwards. TSS is an established consultancy that provides a host of services within the construction, utilities, rail, facilities management, MOD and services sectors throughout the UK.

"TASC is headed by our Health and Safety Director (David Foster) who is a Chartered Fellow of the Institution of Occupational Safety and Health, who has 35+ years' health and safety management / training experience across all of the industry sectors

above. We have retained the services of the former owner of the business (Mike Anderson) on a consultancy basis moving forwards, with a view to using our combined knowledge and experience to further develop the business that Mike had been running for ten years. We have strengthened the TASC team via the recruitment of our Principal Health and Safety Trainer (Steve Pollard) who is a Tech IOSH, and has a wealth of experience in Health & Safety, Quality Assurance, and Improvement and was a Senior Trainer for the RAF.

TSS was attracted to the business on the basis that TASC is a UKATA member delivering high quality, UKATA approved training.

This approach fits in well with the TSS business model, in which we aim to provide all clients with a first class level of service, in order to assist them in their business objectives.

As a business, TASC has a wealth of knowledge and experience throughout industry, working with asbestos containing materials including asbestos removal, remediation, sampling and analysis and we are able to bring this expertise to all aspects of the training we deliver.

We enhance the service provided to our clients and delegates, by conducting IT based training needs analysis prior to and during the Category B and C training courses. This

enables us to tailor the training courses, identify the areas in which delegates are deficient in their underpinning knowledge and then target the specific areas of weakness."

TASC is UKATA approved to deliver all categories of asbestos training (Category A, B and C) and can provide clients with additional safety services, as advertised on its website.

Asbestos deaths

Epidemic expected

Senior doctors have warned that the number of mesothelioma cases affecting workers who were exposed to asbestos before the 1980s has yet to reach its peak.

Mesothelioma, a particularly aggressive cancer caused by exposure to asbestos, kills more than 2,500 people every year in the UK, with men five times more likely to be diagnosed than women.

The cancer, which is caused by the inadvertent inhalation of asbestos fibres, develops in the tissues covering the lungs or abdomen.



Typically it can take anything between 25 years and as long as 50 years to materialise in the body following exposure to asbestos. As such, it is usually diagnosed at an advanced stage which means most people unfortunately die within three years of being diagnosed.

Doctors writing in the British Medical Journal have previously said that the UK and many other developed countries are on the verge of an asbestos disease epidemic, that is likely to start in 2015.

Due to the alarmingly long incubation period, it is widely believed that thousands of workers who were exposed to asbestos before regulations were tightened in the early 1980s, are likely to fall ill in the very near future, creating what many have called a potential 'time bomb' in the disease.

Before restrictions on the use of asbestos were introduced in 1983, the material was widely used as an insulator in ships, factories, refineries,

and chemical and power plants as well as homes, schools and hospitals in the UK.

As a result, throughout the 1950s, 60s and 70s, thousands of shipbuilders, boilermakers, builders and plumbers along with teachers, nurses and even the family members of such workers who would clean their contaminated overalls, were regularly exposed to the deadly material.

Shockingly, it is believed that one in every 100 men born in the 1940s will die of mesothelioma. For men born in the 1940s who were first exposed to asbestos as teenagers whilst working in high risk occupations such as shipbuilding, the risk of developing mesothelioma can be as high as one in five.

Doctors from Guy's Hospital in London have stated that in the developed world alone, 100,000 people who are alive now will die from mesothelioma.

"The peak of the epidemic is expected in 2015 to 2020

when the death rate is likely to be 2,000 per year in the UK. Many countries are seeing the rising tide of an epidemic, and all doctors need to know how to recognise and diagnose this disease and what treatments are available."

When I first started practising law, there were around 1,200 deaths from mesothelioma each year in the UK. Sadly that annual figure has now doubled and the figures are still rising.

These deaths are a legacy of more than half a century of workers particularly within the building industry, being exposed to asbestos on a day-to-day basis at work and crucially not being provided with the adequate protection they needed by their employers.

The number of people being diagnosed with mesothelioma is still rising. Half of all cases are now aged over 70, with 80% of cases affecting men. As it can take so many years for the disease to manifest itself, one of the biggest

challenges facing those bringing compensation claims for asbestos-related cancers is tracing witnesses, former work colleagues and information about past employers and their insurers.

Although employers' liability insurance has been compulsory for many years, the system for tracking it down is complicated. If insurers cannot be found, those who worked diligently all their working lives only to be repaid with such a terrible and incurable disease such as mesothelioma, may not get the compensation they and their families so rightly deserve.

Paul Glanville is a Senior Asbestos Disease Claims Lawyer at Slater & Gordon Lawyers.

<http://www.slatergordon.co.uk/media-centre/blog/2015/01/asbestos-deaths-epidemic-expected-from-2015-to-2020/>

CDM Regulations

For this edition of UKATA Matters, UKATA Director Bob Bridge reports on the key changes to Construction (Design and Management) Regulations (CDM) that came into effect on 6 April 2015.



Many readers will be aware that challenges to the CDM Regulations 2007 came very shortly after coming into force. A Parliamentary debate challenged aspects of the regulations immediately, with the then Government agreeing to an early review after three years, rather than the usual five.

CDM 2007 aimed to improve co-ordination by creating a client advisor (the CDM-C), to improve client focus, increase the focus on competence assessment and to ultimately reduce bureaucracy. All worthy aims, but following evaluation in 2010, the HSE had considerations for change.

Among these, was an acknowledgement that the CDM 2007 Regulations and its ACoP, designed to reduce deaths in the construction industry, was not easily accessible to those running and working on small sites; and these sites are where around 70% of fatalities occur. Whatever else the revised regulations ultimately delivered, they had to be more accessible and appear more relevant to small sites.

Ultimately, while broad support for the main aims remained, concerns centred around how the regulations would work in practice. The Board of the HSE approved the amended proposals in August 2014.

CDM 2015 the Key Changes

At the heart of CDM 2015 is the importance of co-ordination throughout the project from concept to completion. While the 2007 Regulations did set the standard for construction projects, the convoluted structure of the regulations, coupled with the various duty-holder trigger points led to a two tier system, where CDM was widely believed to apply only to 'notifiable' projects. Many will have heard the phrase 'a CDM-able job' and this mindset had to be changed.

The concept of a CDM-able job meant focus was on the mitigation or reduction

of on-site risk, rather than the management of an environment in which risk can, and should be designed out or controlled at source – and long before construction work starts.

CDM 2015 puts the focus back on preventing risk in all projects, rather than just mitigating risk at site level, by planning and co-ordinating the work before construction starts. These principles are present in CDM 2007, but the hierarchy of controls is much more clearly stated in 2015. At its heart is a simplified structure.



CDM 2015 puts the focus back on preventing risk in all projects, rather than just mitigating risk at site level, by planning and co-ordinating the work before construction starts. These principles are present in CDM 2007, but the hierarchy of controls is much more clearly stated in 2015. At its heart is a simplified structure.

The client has been given greater responsibility and made more accountable, with clients expected to exercise their influence on how projects are run. The role of the CDM-C has been removed and while the Principal Designer (PD) is not a direct replacement, they do take on many of the functions previously covered by the CDM-C. Coordination is taken on by the PD in the pre-construction phase and the Principle Contractor (PC) in the construction phase.

There is also a recognition that all too often in the past, training alone has been seen as proof of competence, so the term 'competence' has been removed and replaced with a focus on the component parts – skills, knowledge, training and experience.

A construction phase plan (CPP) is required for ALL projects, even small one-offs like refurbishing a kitchen or roof work. Even if there is one contractor, a CPP must still be drawn up.

Threshold and Notifications

The requirement for a PD and PC kicks in where there is more than one contractor and the client appoints the PD and PC in writing before construction starts. Failure by the client to do this means they must fulfil all these duties themselves.

Notification becomes a standalone requirement. It is no longer a trigger point for CDM or appointments.

A project is Notifiable if it lasts longer than 30 working days and has more than 20 workers working simultaneously at any point or exceeds 500 person days.

Domestic client

A domestic client is one having construction work done on their own home or that of a family member, which is NOT done in connection with a business. In other words, Housing Associations, landlords and property developers are NOT domestic clients.

The domestic exemption in CDM 2007 is no longer legally sustainable, therefore CDM 2015 does not have any domestic exemption and makes no distinction in duties between the domestic and non-domestic client.

An explanation of what will not change

Provisions from 2007 that have worked are embedded in CDM 2015 and remain in place. When CDM 2007 came in, the HSE talked about focusing on the planning and not on the plan. That remains as true now as it was then.

The regulations in Part 4 in respect of stability of structures and demolition remain (with some minor tweaks) as do the requirements

HSE

The HSEs approach to enforcement is unchanged. However, the HSE will be looking 'beyond the site gate' at duty holder roles in projects, to determine if any management failings have contributed to health and safety failings on site.

The main inspection and proactive effort for 2015/16 will cover several factors, including smaller projects and (from a UKATA perspective) refurbishment and asbestos.

For very many small, repeat jobs, existing procedures/ documents will usually be more than sufficient to cover the requirements for CPP – and not dissimilar to the approach already taken by contractors working for the utilities who regularly dig up roads to carry out repairs to services.

Transitional arrangements and impact on UKATA Members

It is not altogether clear if any of the impact on UKATA members will have any negative results. At this early stage, it is not envisaged there will be any.

The key positive result is the need for designers and indeed clients to accept more responsibility for the management of safety in these projects. This means a greater degree of understanding of their legal position where asbestos is concerned. I have experienced some complacency from architects on this matter in the past and these regulations should encourage some of them to think more about this matter. The hope must be it will lead to more UKATA Asbestos Awareness training for architects, building surveyors, managers and estimators.

Bob Bridge
UKATA Director

RoSPA

Asbestos - a naturally occurring fibrous material - is still the single biggest cause of work-related deaths in the UK.



Rob Burgon Workplace
Safety Manager at the Royal
Society for the Prevention of
Accidents (RoSPA)



Known as the “hidden killer”, it is responsible for around 4,500 deaths in Britain each year. It is also the cause of many non-fatal illnesses. The four main diseases caused by asbestos are mesothelioma (a deadly cancer of the lining of the lung), lung cancer, asbestosis and diffuse pleural thickening.

Asbestos can be found in various items in domestic and commercial premises that were built or refurbished before 2000 such as gutters and down pipes, insulation, water tanks, pipe lagging, roof overhangs, wall panelling and vinyl and thermoplastic floor tiles.

The risk of asbestos is associated with the inhalation of its fibres, with a key factor in developing an asbestos related disease being the total number of

fibres breathed in.

Working on or near damaged asbestos containing materials can result in breathing in high levels of asbestos fibres and the more that is inhaled and retained in the lungs, the greater your chances of getting an asbestos-related disease. Even if you are only exposed to small concentrations of asbestos, if these exposures are regular and sustained, the cumulative risk can be significant. Smoking also increases the risk of disease.

The conditions caused by the inhalation of asbestos fibres do not surface until later on in life, often many years after exposure, but it is necessary and sensible to take action now.

Major asbestos removal jobs are highly regulated, but

even those doing occasional work that may involve exposure need training. It is important to take job-specific asbestos training, so you have the skills to deal with asbestos waste using safe work methods and also using appropriate clothing, such as properly fitting respiratory protection.

In choosing an asbestos training course, it would be prudent to look for one that combines theoretical learning (for example, about the health risks of asbestos, legal requirements for its control and methods to monitor its presence and condition), with practical learning, which enables delegates to identify different types of asbestos and gain an introduction to the process for conducting an asbestos risk assessment and take action based on what it has identified.

The legal landscape

People who own or control workplaces have a legal duty to identify and manage the asbestos that is in their premises and to keep their employees, contractors and tradesmen informed of its location and condition. Our dealings with employers who request one of our Control of Asbestos at Work Regulations Reviews or book a place on our Asbestos Awareness training course reveal just how much demand there is from firms who want to be sure they meet the necessary legislative requirements, in particular this “duty to manage” asbestos.



One of the changes the Control of Asbestos at Work 2012 Regulations brought in was that by April 30 2015, all workers carrying out "notifiable non-licensed work" (NNLW) should have had a medical examination. That time is up. These examinations will need to continue every three years if the worker continues to carry out NNLW. Records must be kept of workers in relation to NNLW, including their likely levels of exposure to asbestos.

In practice, the changes were not particularly far reaching, and if existing asbestos containing materials are in a good condition and are not likely to be damaged, they may be left in place with their condition monitored and managed to ensure they are not disturbed.

Staying the same was the duty to manage asbestos if you're responsible for the maintenance of non-domestic premises. If you want to do any building or maintenance work where asbestos might be present, the requirement to identify asbestos, assess the risks and manage and control the risks was also unchanged. The requirements for licensed work (in the majority of cases, work with asbestos needs to be done by a licensed contractor) remain, as does the mandatory training requirement for anyone liable to be exposed to asbestos fibres at work.

A final word

Provisional figures from the Health and Safety Executive (HSE) show that

133 workers were fatally injured in workplaces in Britain in 2013/14. However, it must be remembered that workplace accidents represent just a small part of the overall burden of work-related death. Work-related road accidents, for example, are not included in the HSE figures and are estimated to be much higher in number than accidents in fixed workplaces. There is also the largely unseen burden of harm due to work-related health damage, of which asbestos related disease is just a part.

The level of work-related ill-health demonstrates how severe the consequences of prevention failure can be and it is a major burden on families and society.

Even though asbestos remains Britain's number

one workplace killer, taking action now could prevent you and those who work with you or for you suffering the dreadful consequences in years to come. Ignorance about the effects of asbestos remains widespread. If you are working with asbestos and are not certain about what precautions to take, our advice would be to stop work immediately and seek advice.

- You can read more about the risks associated with asbestos and information and advice about managing the risks on the Health and Safety Executive's website at www.hse.gov.uk/asbestos/hiddenkiller/.

More information about RoSPA's Control of Asbestos at Work Regulations Review is available at www.rospa.com/consultancy/managinghealthsafetywelfare/policyprocedurereview/asbestos.aspx Alternatively, email enquiries@rospa.com or call 0121 248 2233

Competitions



With the summer here, and the UKATA AGM and Conference on the horizon, we have teamed up with the Radisson Blu hotel to offer one reader a complimentary room for Thursday 9 July. This means the winner will be able to attend the UKATA evening meal and drinks reception between 7.00pm and 9.00pm and enjoy a good night's sleep before attending the AGM and Conference the following morning.

To win, all you have to do is answer the following teaser:

Which UK Airport is the UKATA AGM (held at the Radisson Blu), nearest to:

- A) Birmingham**
- B) Manchester**
- C) East Midlands**



Amazing rooms on display at the Radisson Blu.

Email your answer on an email headed 'UKATA MATTERS COMPETITION', no later than Friday 19 June, to Gill Lewis at UKATA, email gill.lewis@ukata.org.uk



UKATA Easter Hamper winner

The winner of our Easter hamper competition from the spring issue was Mike Wykes of Coal Consultants Ltd. The picture shows Beth Mills receiving the hamper on behalf of Mike, who walked away with our luxury hamper worth £70. Congratulations!



Usual UKATA Member Ts and Cs apply. Member companies only. No limit on the number of directors and employees that can enter from a Member company, but only one entry per individual. No cash alternative. No alternative prize. Judge's decision final. The winner agrees to publicity in the next UKATA Matters, on UKATA's website and social media streams, etc. The winner's name will be given to the Radisson Blu hotel. One room only all additional items must be paid for by winner on check out. No cash alternative.

marsden
direct group Ltd

EXHIBITION SERVICES



Proud contractor to UKATA



Bespoke



Modular



Shell Scheme

...Design to Reality



[impact]

Marsden Direct

have over 30 years
experience in the exhibition industry
and offer solutions for all budgets.

We provide our clients with design, project management,
build and installation services with complete on-site support.

We even offer **FREE** stand hire with our Impact system!



design



print



manufacture



manage

info@marsdendirect.co.uk

01509 238 800

marsdendirect.co.uk

RADISSON BLU

TRAVEL EASILY TO NEARBY CITIES VIA THE M1 MOTORWAY AND TAKE ADVANTAGE OF QUICK ACCESS TO LOCAL BUSINESSES AND AIRPORT TERMINALS.

FEEL AT HOME IN ONE OF OUR STYLISH HOTEL ROOMS AND SUITES FREE HIGH-SPEED, WIRELESS INTERNET ACCESS AND FULL FITNESS CENTRE WITH POOL

CHOOSE FROM NINE MEETING ROOMS WITH ACCOMMODATION FOR UP TO 400 DELEGATES.

EAST MIDLANDS AIRPORT

RADISSON BLU HOTEL EAST MIDLANDS AIRPORT

Herald Way, Pegasus Business Park, DE74 2TZ Derby, United Kingdom

T: +44 1509 670575 sales.eastmidlandsairport@radissonblu.com radissonblu.co.uk/hotel-eastmidlandsairport